

# MONTHLY MEMBERSHIP PROGRESS REPORT

LOCATION INDIA

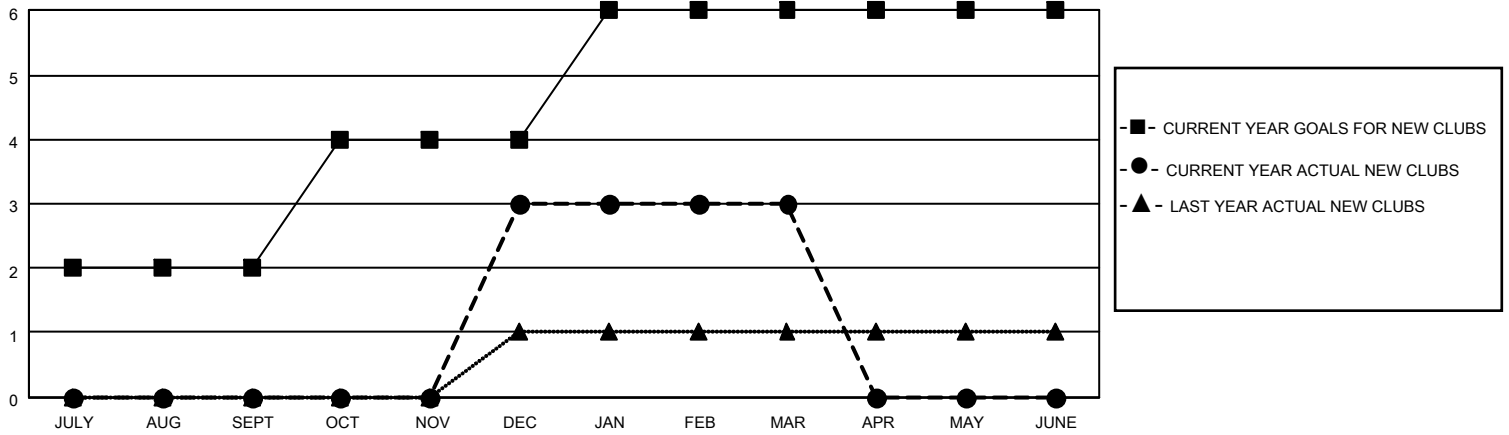
District 322C5

Results as of: 3/31/2021

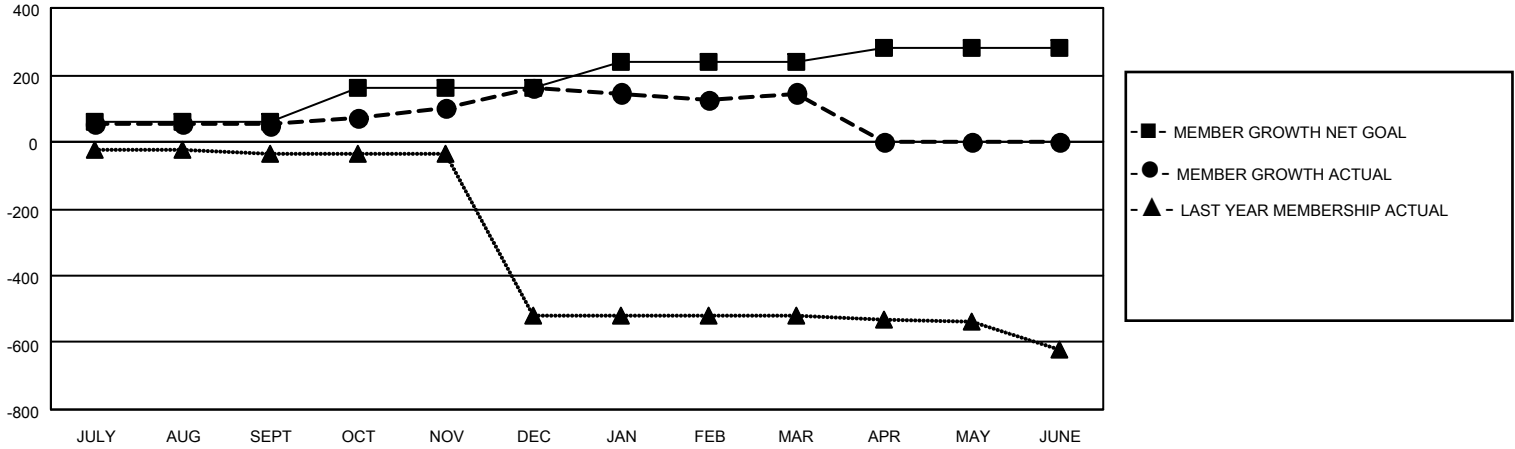
Clubs			
RESULTS FOR 2020-2021			
QUARTER	NEW CLUB GOAL	NEW CLUBS	DROPPED CLUBS
JULY/AUG/SEPT	2	0	0
OCT/NOV/DEC	2	3	0
JAN/FEB/MAR	2	0	1
APR/MAY/JUNE	0	0	0

Members			
RESULTS FOR 2020-2021			
QUARTER	MEMBER GROWTH NET GOAL	MEMBER GROWTH ACTUAL	DROPPED MEMBERS ACTUAL (including transfers)
JULY/AUG/SEPT	60	92	16
OCT/NOV/DEC	100	226	95
JAN/FEB/MAR	80	50	60
APR/MAY/JUNE	40	0	0

**GOALS AND ACTUAL NEW CLUBS CUMULATIVE**



**GOALS AND ACTUAL MEMBERS CUMULATIVE**



DROPPED CLUBS: 1
------------------

31 CLUBS OF 51 ADDED 1 OR MORE NEW MEMBERS

<u>GENDER DISTRIBUTION</u>	
MALE	940 (59.87%)
FEMALE	630 (40.13%)

<u>DROPPED MEMBERS</u>	
DECEASED	13
CLUB CANCELLED	16
OTHER	142
<b>TOTAL</b>	<b>171</b>

[CLICK HERE FOR CUMULATIVE MEMBERSHIP DATA](#)

TOTAL FAMILY UNIT MEMBERS	869
FAMILY MEMBERS PAYING HALF DUES	516